

INSTRUMENTS

GREENS®



AWL

Bone Awl with Fibre Handle



DIA: 3.0mm
Length: 200mm

St.: 851.031
Cd.: 851.030

Bending Iron for Ø3.5 and 4.5mm



Length: 190mm

CAT No.: 851.401

Kuntscher's Diamond Pointed Awl



St.: 851.051
Cd.: 851.050

Roller Plate Bender- Large
(for Narrow & Broad plates)



CAT No.: 851.410

Awl with Protection Sleeve



CAT No.: 851.054

Bending Press- Large (A.O. Type)



CAT No.: 851.421

Length: 400mm

BENDER

Bending Iron for Ø2.7 and 3.5mm



CAT No.: 329.400

Length: 150mm
Slit Width 2.5 and 4.5mm

K. Wire Bender



CAT No.: 851.425

1.5mm
2.0mm
Length: 115mm

INSTRUMENTS

GREENS®



Bending Iron
for Reconstruction Plates Ø3.5 and 4.5mm



LENGTH: 240mm

CAT No.: 851.430

Hay Grooves Bone Holding Forcep



LENGTH	
200mm	855.098
250mm	855.100
300mm	855.102

BONE HOLDING CLAMPS

Lowman's Bone Holding Clamp



	LENGTH	
Small	125mm	855.005
Medium	160mm	855.006
Large	200mm	855.008

Self Centering Bone Holding Forcep



LENGTH	
150mm	855.124
190mm	855.127
240mm	855.130
260mm	855.133

Burn Bone Holding Forcep



CAT No.: 855.040

Fibula Forcep



St.: 855.150
Cd.: 855.152

LENGTH: 210mm, Speed Lock

Lane's Bone Holding Forceps



	with Ratchet	without Ratchet
250mm	855.070	855.080
300mm	855.072	855.082

Holding Forceps for Tibial Edge Fragments

Photo N.A.

LENGTH: 210mm, Speed Lock

CAT No.: 855.160

INSTRUMENTS

GREENS®



Patella Holding Forcep



CAT No.: 851.430

BONE SPREADER

Bone Spreader



LENGTH	
140mm	855.204
210mm	855.201
270mm	855.207

BONE CUTTER

Bone Cutter



LENGTH	Straight	Curved
190mm	855.219	855.220
225mm	855.225	855.226
270mm	855.700	855.271

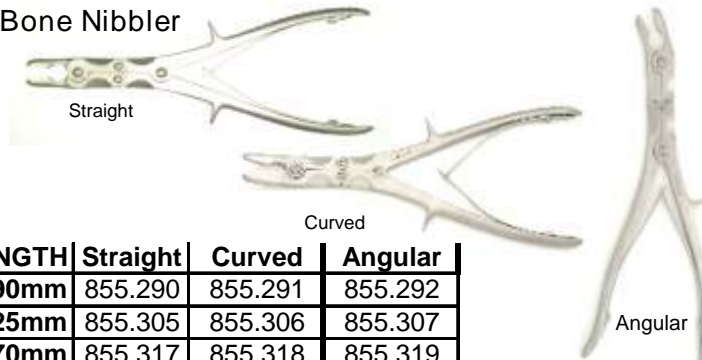
Tudor Edward Bone Cutting Forcep



CAT No.: 855.278

BONE NIBBLER

Bone Nibbler



LENGTH	Straight	Curved	Angular
190mm	855.290	855.291	855.292
225mm	855.305	855.306	855.307
270mm	855.317	855.318	855.319

Bone Nibbler- Single Action



CAT No.: 855.325

CHISEL

Chisel with Fibre Handle



5mm	855.355
10mm	855.360
15mm	855.365
20mm	855.370

OSTEOTOME

Osteotome with Fibre Handle



Dia	Straight	Curved
6mm	855.406	855.407
12mm	855.412	855.413
18mm	855.418	855.419
24mm	855.424	855.425
20mm	855.430	855.431

INSTRUMENTS

GREENS®



OSTEOTOME

Osteotome with S.S. Handle



Dia	Straight	Curved
6mm	855.506	855.507
12mm	855.512	855.513
18mm	855.518	855.519
24mm	855.524	855.525
20mm	855.530	855.531

CURETTE

Volkman Bone Curette (Double Ended)



LENGTH: 180mm

CAT No.: 855.555

GOUGES

Gouges with Fibre Handle



Dia	Straight	Curved
05mm	399.610	399.650
10mm	399.620	399.660
15mm	399.630	399.670

Bone Curette with Fibre Handle



Small: 855.560
Medium: 855.562
Large: 855.564

Moores Hollow Chisel



CAT No.: 855.540

Long Curette for Acetabular Cap



CAT No.: 855.570

CLAMP

Charnley Compression Clamps
with 2 Steinmann Pins



CAT No.: 855.550

CRAMMER WIRE SPLINTS

1"x 24"	855.591
2"x 24"	855.592
3"x 24"	855.593
4"x 40"	855.594
5"x 36"	855.595
6"x 36"	855.596

Photo N.A.

INSTRUMENTS

GREENS®



DRILLS

Electric Drill with S.S Chuck & Key
with Foot Control in Box

Photo N.A.

CAT No.: 857.005

Micro Hand Drill with S.S Chuck & Key- Open gear



CAT No.: 857.022

Universal Bone Drill with S.S Chuck & Key-
Closed gear



CAT No.: 857.010

Universal Bone Drill with S.S Chuck & Key-
Open gear



CAT No.: 857.013

Micro Hand Drill with S.S Chuck & Key- Closed gear



CAT No.: 857.020

INSTRUMENTS

GREENS®



DRILL BIT- S.S

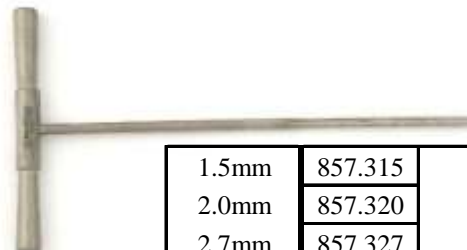
Drill Bit- Non Coupling



DIA	LENGTH		
	125mm	225mm	300mm
1.1mm	857.041		
1.5mm	857.043		
2.0mm	857.045		
2.5mm	857.047	857.060	
2.7mm	857.048	857.061	
3.2mm	857.049	857.062	
3.5mm	857.051	857.064	
4.0mm	857.053	857.066	857.085
4.5mm	857.055	857.067	
.0 x 3.2mm		857.069	857.088

Drill Tap with T-Handle

Drill Tap with T-Handle



1.5mm	857.315	
2.0mm	857.320	
2.7mm	857.327	
3.5mm	857.335	(20 TPI)
3.5mm	857.336	(14 TPI)
4.0mm	857.340	(14 TPI)
4.5mm	857.345	
6.5mm	857.365	(9 TPI)

Drill Bit- Coupling End



DIA	LENGTH	
	125mm	225mm
1.5mm	857.095	
2.0mm	857.097	
2.5mm	857.099	857.163
2.7mm	857.100	857.165
3.2mm	857.101	857.167
3.5mm	857.103	857.169
4.0mm	857.105	857.171
4.5mm	857.107	857.173

Drill Tap with Coupling End

Photo N.A.

1.5mm	857.415	
2.0mm	857.420	
2.7mm	857.427	
3.5mm	857.435	(20 TPI)
3.5mm	857.436	(14 TPI)
4.0mm	857.438	(14 TPI)
4.5mm	857.445	
6.5mm	857.465	(9 TPI)

Cannulated Drill Bit- Calibrated



DIA	LENGTH		
	125mm	225mm	300mm
2.7mm	857.227		
3.2mm	858.232		
4.0mm		857.248	858.252
4.5mm		857.251	
5.5mm			857.254

Cannulated Drill Tap with T-Handle- Non Calibrated



3.5mm	857.535
4.0mm	857.540
4.5mm	857.545

INSTRUMENTS

GREENS®



Cannulated Drill Tap with T-Handle- Calibrated



DIA: 7.0mm

CAT No.: 857.570

Drill Sleeve Pointed (C- Pointed Drill Guide)

Photo N.A.

used with Double Drill Sleeve- 4.5/3.2 mm

CAT No.: 312.470

DRILL SLEEVE ,TAP SLEEVE

Insert Drill Sleeve Ø 4.5/ 3.2mm

Double Drill Sleeve- Ø 3.5/2.5 mm

Photo N.A.

Photo N.A.

Length: 80mm
for Long lag screw

CAT No.: 312.280

for 3.5 and 4.0mm Scerws
Drill Bits, 2.5 to 3.5mm dia.
Taps 3.5 to 4.0

CAT No.: 312.480

DISSECTORS

Blunt Dissectors

Double Drill Sleeve- Ø 4.5/3.2 mm



Photo N.A.

CAT No.: 312.460

for 4.5mm Cortex Scerws
Drill Bits: 4.5 and 3.2mm dia.

CAT No.: 861.010

ELEVATORS

Parabeuf's Periosteal Elevators

Insert Drill Sleeve with Stop for Ø 4.5mm screws

Photo N.A.



Adjustable Length to limit drilling depth
Outer dia. 4.5mm for drill bits of 3.2mm dia.

CAT No.: 312.330

St.: 861.050
Cd.: 861.065

INSTRUMENTS

GREENS®



ESMARCH BANDAGE

Esmarch Rubber Bandage



Length (in MM)	
75	861.203
100	861.204
125	861.205
150	861.206

Square Nail Extractor (set of 3)



CAT No.: 861.230

DIA	
2.0/ 2.5 mm	861.232
3.0/ 3.5 mm	861.235
4.0mm	861.237

EXTRACTORS

K. Nail Extractor with 2 hooks

Photo N.A.

CAT No.: 861.215

Judet Head Extractor



CAT No.: 861.241

K. Nail Extractor- Fibre Handle with 2 hooks

Photo N.A.

CAT No.: 861.218

Spare Hook for K. Nail Extractor



CAT No.: 861.222

A.M Extractor with 2 hooks

Photo N.A.

CAT No.: 861.219

Spare Hook for A.M Extractor



CAT No.: 861.224

INSTRUMENTS

GREENS®



FORCEPS

Screw Holding Forcep



Dia 3.5mm: 319.970
Dia 4.5mm: 861.240

Forcep for Screw Removal (New type)

Photo N.A.

CAT No.: 861.264

GAUGES

Depth Gauge



Dia 3.5mm: 319.010
Dia 4.5mm: 319.100

Plate Holding Forcep



CAT No.: 861.245

K. Nail Measuring Gauge (Ø 6mm to 13mm)

Photo N.A.

CAT No.: 319.020

Bone Plate Holding Forcep (Mani type)



CAT No.: 861.260

Measuring Gauge for Prosthesis



(Ø 37mm to 55mm), 10nos.

Forcep for Screw Removal (A.O type)



CAT No.: 398.650

Length: 205mm

CAT No.: 861.270

INSTRUMENTS

GREENS®



GUIDES

Neutral & Loaded Drill Guide



Dia 3.5mm: 322.320
Dia 4.5mm: 322.440

Gigly Saw Handle- 1 pair



CAT No.: 861.325

HAMMER

Bone Hammer with Fibre Handle



Weight

200 gms.	861.300
350 gms.	399.410
500 gms.	399.420
700 gms.	399.430

T- Handle with S.S Chuck & Key



CAT No.: 861.330

Bone Hammer Nylon Faced

Photo N.A.

CAT No.: 861.310

Quick Coupling Adaptor with T- Handle



CAT No.: 861.335

HANDLES

Handle for Insertion of Steinmann Pin & Schanz Screw



CAT No.: 395.380

Quick Coupling Adaptor without T- Handle for Universal Chuck



CAT No.: 861.337

INSTRUMENTS

GREENS®



Spare S.S Chuck with Key



CAT No.: 861.340

Square Nail Impactor

Photo N.A.

CAT No.: 861.375

Spare S.S Key

Photo N.A.

CAT No.: 861.342

Nylon Faced Aluminium Impactor



CAT No.: 861.378

HOOKS

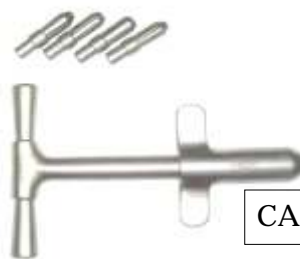
Bone Hook



Small	861.360
Medium	861.362
Large	861.364

INTRODUCERS

Guide Wire/ K. Wire Introducer



CAT No.: 861.391

IMPACTOR

K. Nail Impactor



CAT No.: 861.370

LEVERS

Bone Lever Plain- Lane's type



Small	212.5	861.400
Medium	262.5	861.410
Large	312.5	861.412
Ex.Large	362.5	861.414

INSTRUMENTS

GREENS®



Bone Lever with Serrated End



CAT No.: 861.421

Plaster Saw- Heavy Handle



CAT No.: 861.468

PLASTER CUTTING INSTRUMENTS

Electric Oscillating Plaster Cutting Saw- Metal Body



CAT No.: 861.450

Plaster Saw- Engel



CAT No.: 861.472

Electric Oscillating Plaster Cutting Saw- Fibre Body



CAT No.: 861.455

Plaster Saw- Bergman



CAT No.: 861.474

Spare Oscillating Saw for Elec. Plaster cutter- 1 pair



CAT No.: 861.458

Plaster Saw- Hasley



CAT No.: 861.478

▶ INSTRUMENTS

GREENS®



RASPS

Cannulated Rasp

Photo N.A.

CAT No.: 861.503

Special Rasp for Austin Moore

Photo N.A.

CAT No.: 861.505

Rasp for Thompson

Photo N.A.

CAT No.: 861.508

Rasp for Austin Moore- Narrow Stem

Photo N.A.

CAT No.: 861.511

Plaster Spreader



CAT No.: 861.482

Plaster Shear- Bohler's

Photo N.A.

CAT No.: 861.485

Plaster Bender/ Twister



CAT No.: 861.490

Finger Plaster Saw- Window Opener



CAT No.: 861.498

INSTRUMENTS

GREENS®



Rasp for Bipolar Prosthesis



CAT No.: 861.514

Hollow Mill Quick Coupling (Set of 3)



DIA

1.5/ 2.0 mm	309.200
3.5/ 4.0 mm	309.035
4.5mm	309.450

Spare Tomy Bar for Rasp



CAT No.: 861.518

Cannulated Reamer (T-Handle)

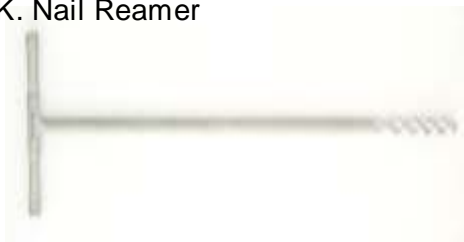


DIA

6mm	861.576
7mm	861.577
8mm	861.578
9mm	861.579
10mm	861.580
11mm	861.581
12mm	861.582
13mm	861.583

REAMER

K. Nail Reamer



6mm	861.526
7mm	861.527
8mm	861.528
9mm	861.529
10mm	861.530
11mm	861.531
12mm	861.532
13mm	861.533

RETRACTORS

Self Retaining Retractor



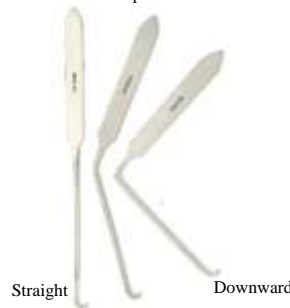
Small	864.030
Medium	864.033
Large	864.035
Ex.Large	864.037

Square Nail Reamer



2.0mm	861.552
2.5mm	861.554
3.0mm	861.556
3.5mm	861.558
4.0mm	861.560

Nerve Root Retractor (Set of 3)



Straight	864.042
Upward	864.044
Downward	864.046

CAT No.: 864.040

INSTRUMENTS

GREENS®



Bristow Retractor



CAT No.: 864.050

Pelvic Reduction Forceps, Asymmetric/uneven with Pointed Ball Tips

Photo N.A.

CAT No.: 398.730

Length: 400mm

Dura Retractor



CAT No.: 864.052

Pelvic Reduction Forceps for Screws with Ratchet

Photo N.A.

L- 300mm : 398.742

L- 350mm : 398.744

Charnley Retractor with Weight & Chain



CAT No.: 864.057

Pelvic Reduction Forceps, Oblique with Pointed Ball Tips, Speed Lock

Photo N.A.

	LENGTH		
	200mm	250mm	400mm
Straight	398.864	398.862	398.860
Curved	398.840	398.850	398.852

PELVIC INSTRUMENTS

Pelvic Retractor, Blunt

Photo N.A.

CAT No.: 398.550

Length: 250mm

Pelvic Reduction Forceps, Long with 3 Pointed Ball Tips, Speed Lock

Photo N.A.

CAT No.: 398.870

Length: 400mm

INSTRUMENTS

GREENS®



Pelvic Reduction Forceps for Screws- Adjustable

Photo N.A.

Dia 3.5mm : 398.882
Dia 4.5mm : 398.880

Length: 350mm

RETRACTORS

Hohmann Retractors



864.108	Hohmann Retractor, Width- 08mm, L 220mm
864.118	Hohmann Retractor, Width- 18mm, L 235mm
864.120	Hohmann Retractor, Width- 18mm, L 235mm (Long Narrow Tip)
3.30.517	Hohmann Retractor, Width- 43mm, L 240mm
864.125	Hohmann Retractor, Width- 70mm, L 240mm
864.143	Hohmann Retractor, Width- 43mm, L 235mm (Long Angle Blade)
3.30.515	Hohmann Retractor, Width- 22mm, L 250mm (Wide Tip)
864.144	Hohmann Retractor, Width- 44mm, L 270mm (Long and Wide Tip for Hip Surgery)
864.150	Hohmann Retractor, 90 ° (Long and Narrow Tip) for THR/ TKR
864.153	Hohmann Retractor, 90 ° (Long and Narrow Double Tip) forTHR/ TKR
864.157	S- Retractor for THR/ TKR

INSTRUMENTS

GREENS®



REDUCTION FORCEPS

Reduction Forceps- Serrated Jaw, Speed Lock



LENGTH
(in MM)

150	864.215
170	864.217
190	864.219
210	864.221
240	864.224

Reduction Forceps- Olive Point, Ratchet Lock

Photo N.A.

180mm: 864.318
210mm: 864.321

Reduction Forceps- Pointed, Speed Lock



LENGTH
(in MM)

130	864.243
170	864.247
190	864.249
210	864.251
240	864.254

RONGEURS

Up Cutting Rongeur



2.0mm	864.360
2.5mm	864.362
3.0mm	864.364
4.0mm	864.366

Reduction Forceps, Ratchet Lock- Serrated Jaw

Photo N.A.

140mm: 864.274
170mm: 864.277

Down Cutting Rongeur-



DIA

2.0mm	864.380
2.5mm	864.382
3.0mm	864.384
4.0mm	864.386

Reduction Forceps, Ratchet Lock- Pointed

Photo N.A.

Length: 200mm

CAT No.: 864.280

Kerrison Punch 40° angle



Up Cutting: 864.390
Down Cutting: 864.392

INSTRUMENTS

GREENS®



Disc Forcep (Pituitary Rongeur)

Straight	864.400
Upward	864.402
Downward	864.404
Left	864.406
Right	864.408



Hexagonal Screw Driver with Fibre Handle



	DIA	CAT NO.
	2.0mm	868.010
	3.5mm	868.014
	4.5mm	868.018
Delux	3.5mm	868.035
Delux	4.5mm	868.040

SCALE

6" Scale with Drill Gauge in MM

Photo N.A.

CAT No.: 864.420

Hexagonal Screw Driver with Sleeve



	DIA	CAT NO.
Welding Sleeve	4.5mm	868.075
with Sleeve	3.5mm	868.085

SAW

Amputation Saw



CAT No.: 864.440

Hexagonal Screw Driver with T- Handle

Photo N.A.

DIA	CAT NO.
3.5mm	868.095
4.5mm	868.098

SCREW DRIVER

Cross- Slot (Cruciform) Screw Driver with Fibre Handle
Ø 1.5 mm

Photo N.A.

CAT No.: 864.515

Hexagonal Screw Driver with Q.C Shaft



DIA	CAT NO.
3.5mm	868.105
4.5mm	868.108

INSTRUMENTS

GREENS®



Cannulated Screw Driver



	DIA	CAT NO.
	3.5/ 4.0mm	868.135
	4.5/6.5mm	868.138
Delux	3.5/ 4.0mm	868.140
Delux	4.5/6.5mm	868.145

Crutch Filed Tong with 2 Burrs



Small	868.430
Medium	868.432
Large	868.434

Torque Limiting Screw Driver

Photo N.A.

DIA	CAT NO.
3.5/ 4.0mm	868.150
5.0mm	868.154

2 Burrs (Spare) for Crutch Filed Tong



CAT No.: 868.440

TRACTION

Instatrak

(A Complete set of Sterilised Skeltal Traction Kit for Tibia/ Femur with Steinmann Pin Ø 4.5mm x 200mm (Sterilised))



CAT No.: 868.300

Skull Traction (Semi Lunar Shape)



CAT No.: 868.451

Bohler's Stirrup



LENGTH	CAT NO.
150mm	868.406
200mm	868.408
250mm	868.410
450mm	868.418

INSTRUMENTS

GREENS®



WIRES

Guide Wire

Photo N.A.

	DIA	CAT NO.
Plain	1.0mm	872.010
Plain	1.2mm	872.012
Plain	1.5mm	872.015
Plain	1.8mm	872.018
Plain	2.0mm	872.020
Plain	3.0mm	872.024
Threaded	1.2mm	872.032
Threaded	1.5mm	872.035
Threaded	1.8mm	872.038
Threaded	2.0mm	872.040
Threaded	2.5mm	872.045
Threaded	3.0mm	872.047
Graduated	2.5mm	872.052
FN (375mm)	2.0mm	872.055
for K.Nail	3.0mm	872.063
for K.Nail	4.0mm	872.064

Gigly Wire



Photo N.A.

CAT No.: 872.066

Gigly Wire Delux

Photo N.A.

CAT No.: 872.068

MISCELLANEOUS

Bone File



CAT No.: 878.013

Reamer Hand Piece Adaptor for Universal Chuck

Photo N.A.

CAT No.: 878.033

Allen key



SHAPE	DIA	CAT NO.
L-Shape	2.0mm	878.050
L-Shape	2.5mm	878.051
L-Shape	3.0mm	878.053
L-Shape	5.0mm	878.055
T-Shape	2.5mm	878.058
T-Shape	3.0mm	878.059

INSTRUMENTS

GREENS®



WIRE INSTRUMENTS

Nose Plier cum Wire Bender cum Wire Cutter



LENGTH	CAT NO.
175mm	872.077
225mm	872.079

Wire Tightner with 2 Pegs- Zet type



CAT No.: 872.104

Wire Twister- Circular



CAT No.: 872.094

Wire Passer with Fibre Handle



CAT No.: 872.115

Wire Twister cum Cutter



CAT No.: 872.097

Wire Tightner cum Twister



CAT No.: 872.101